

# Novelio® Renovation

Paintable wallcoverings  
suitable for renovation



EASY RENOVATION



PRE-PAINTED



IMPACT  
RESISTANT



# The solution quickly renovating your old walls

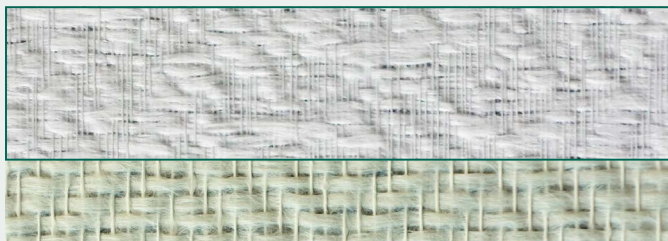
A glass fibre wallcovering laminated with a fleece to offer unique features.

- Excellent reaction to fire – Euroclass B-s1,d0
- High resistance to impact and abrasion thanks to the use of glass fibre
- Great performance at covering cracks and imperfections thanks to the thickness of the product – 2,5 mm
- Flat finish available

## Recommendation

- For covering old wallcoverings which have a structured pattern
- Thorough renovation of old, irregular and cracked walls

### Taloche wallcovering



#### Taloche

N0892 – 220 g/m<sup>2</sup>



N0892CE



N0892C

### Renolisse wallcovering



#### Renolisse

GV250CR – 250 g/m<sup>2</sup>

PAINTABLE	Finish	Type	Weight	Roll size	Rolls/Pallet	Quantity/Pallet
			g/m <sup>2</sup>	m x m	PCS	m <sup>2</sup>
	RENOVATION	GV190CR	410	25 x 1	12	300
		GV250CR	250	15 x 1	24	360
		N0892	220	25 x 1	24	600
		T1013CR	380	25 x 1	12	300
		T3111CR	380	25 x 1	12	300
		N0892CE	250	25 x 1	35	875
		N0892C	220	25 x 1	40	1000

### Renocover wallcovering



#### Decoveil

GV190CR – 410 g/m<sup>2</sup>



#### Crepi

T3111CR – 380 g/m<sup>2</sup>



#### Weaving

T1013CR – 380 g/m<sup>2</sup>

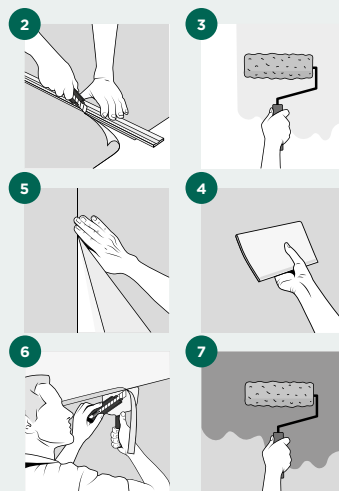
[www.adfors.com](http://www.adfors.com)

## Instructions

The wall must be clean (no dust, dirt or grease), dry, even and primed. Temperature should not be below 8 °C.

1. Prior to start check that wall is clean and free of mold.
2. Cut to length according to room height (+10 cm).
3. Apply the dispersion adhesive evenly on the wall using a roller (-200 g/m<sup>2</sup>).
4. Place the wallcovering panel on the wall vertically and smooth it with a plastic spatula.
5. Place the adjacent panel edge to edge (respect vertical pattern repeat). Repeat steps 1, 2, and 3 with other panels until you have finished the room.
6. Cut off any surplus with a knife.
7. Apply a 1st layer of acrylic paint when the product is dry (-1 day). Apply a 2nd layer of acrylic paint when the product is dry (-1 day).

The glass fibre fabric is carefully checked before leaving our factory but should also be checked again just before hanging. Any claim should be accompanied with roll label and a sample featuring the defect.



**SAINT-GOBAIN ADFORS CZ s.r.o.**

Sokolovská 106

570 21 Litomyšl • Czech Republic

Tel. : +420 461 651 111, +420 461 651 231

[www.adfors.com](http://www.adfors.com)